

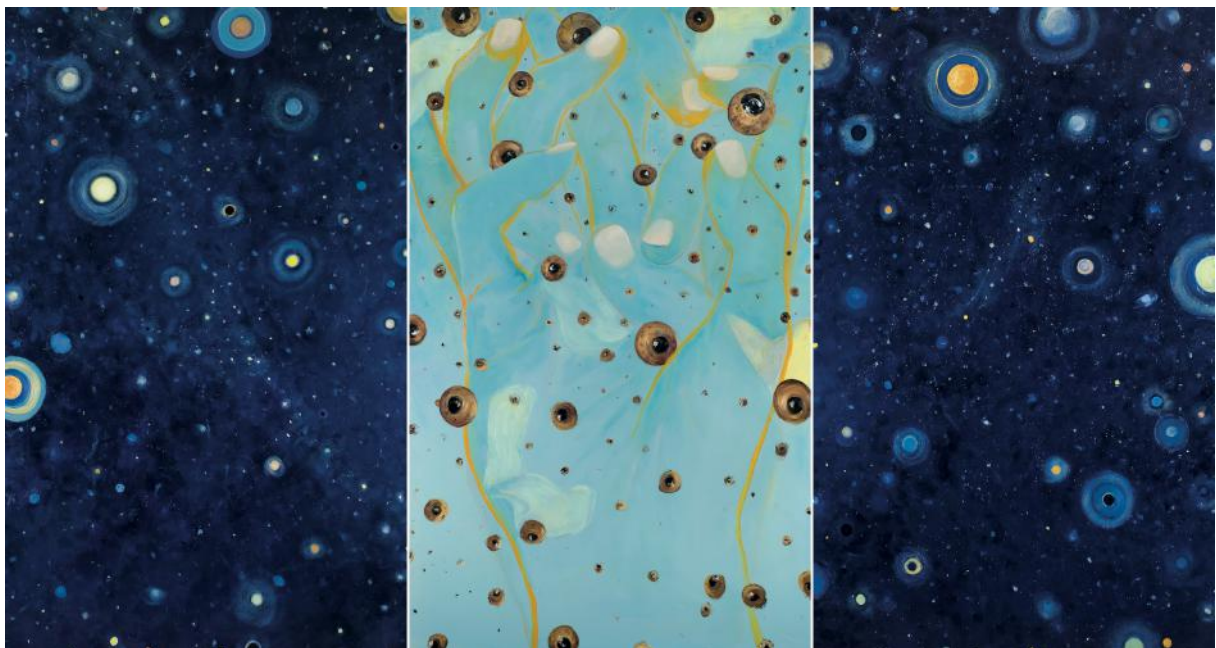


CHÂTEAU DE PONCÉ

A renaissance castle in the Loire Valley

Exhibition

Jörg Langhans
July 2nd to September 18th, 2016



Jörg Langhans, *Planétarium*, 2008, huile sur toile, 240x450cm

Exhibition Opening

Saturday, July 2nd, 2016
From 2:30 to 6:30pm

Press Release

On the exhibition and visit to the Château de Poncé

Press Contact: Marie Hélène de la Forest Divonne – 12 rue des Beaux-Arts – 75006 Paris
Château de Poncé, 8 rue des Coteaux, 72340 Poncé-sur-le-Loir (Sarthe)
www.chateaudeponce.com / chateaudeponce@gmail.com, t.+33 (0)6 72 80 67 35 / 06 50 22 68 35

EXHIBITION REPORT

JÖRG LANGHANS

Exhibition from July 2nd to September 18th, 2016

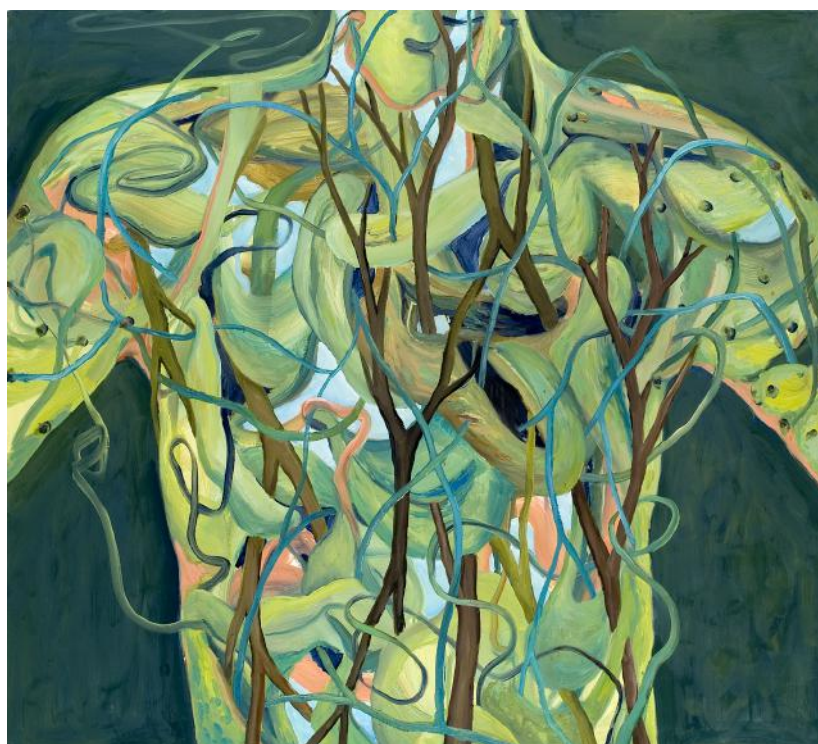
Jörg Langhans

Constellation for a Portrait...

Since 2012, the outbuildings of the Château de Poncé have been transformed into an exhibition venue. This year, for the first time, the Château is presenting a personal exhibition: *Jörg Langhans and his recent paintings*.

He conceived the exhibition around this venue, **imagining it as a rite of passage. The spectator will discover his paintings from room to room, as a progression through his internal world. His universe is made up of his trees, his rivers, his mysterious and dark passageways, his mountains and his forests; these recurring themes are like lianas of the subconscious.**

After having visited this site [the Château] I felt as if I had reached a foregone conclusion: One must build a bridge that transports the spectator from the universal to the personal, from a symbolic cross to a portrait. The idea of this installation, which I have named "Ephemeral Constellation for a Portrait," then came to me. My goal is to be able to create a tension that will bring the spectator toward something unexpected: the portrait of my friend, Jacques Grand. I would like the visitor to be seized by the multiplicity of my subjects and by this portrait's striking grand finale. This face, in its extreme solitude, could transcribe the desire to come together and dissolve into Universality. Through this exhibition, I seek to express that everything is much more vast than it seems. We are compartmentalized by our bodies, but every individual is much greater than that. My painting symbolizes this quest for expansion, for infusing all of mankind with the immensity of the cosmos. I am on a quest for meaning, no matter what I am painting...



Jörg Langhans, *The motionless traveler XIII*, 2007, oil on canvas, 146x162cm



Jörg Langhans, *Hands for Seeing*, 2008, Oil on canvas, 200x150cm



Jörg Langhans, *Hands for Seeing VI*, 2008, Oil on canvas, 200x150cm



Jörg Langhans, *Untitled*, 2014, Oil on Wood, 125x122 cm

JÖRG LANGHANS

Jörg Langhans was born in Bonn, Germany in 1966. It is after having moved to Paris, in 1984, that he was seized by the urge to paint. Following a series of self-portraits in 1993, he arrived at a fragmented vision of the human body, where the eye, the mouth, and the hand become recurring elements of his work. Seeking symbolic reunification, Jörg Langhans works from self-portraits to combine botanical and organic elements, representative of the cyclical nature of the universe, with the human body. He currently lives and works in Angy in Oise.

1999-2000 Member of the artistic section of Casa de Velázquez, Madrid

1998-1999 Receives grant from Ville de Paris, Casa de Velázquez, Madrid

1991 Graduated from l'École Nationale Supérieure des Beaux-Arts de Paris

PERSONAL EXHIBITIONS:

2013 Galerie La Forest Divonne, Paris

Man-Landscape, Le Loft Sévigné, Paris

2011 Inventory (25 years of paintings), Galerie Bruno Mory, Besanceuil (Saône-et-Loire)

2009 Hands for Seeing, Galerie Nathalie Gaillard, Paris*

2008 The Immobile Traveller, Galerie Nathalie Gaillard, Paris

2007 First-Memories, Galerie Bruno Mory, Besanceuil (Saône-et-Loire)

2005 The Immobile Traveller, Galerie Bruno Mory, Besanceuil (Saône et Loire)*

2004 ST 'ART , One-man show, Galerie Nathalie Gaillard, Strasbourg

2003 ART PARIS , One-man show, Galerie Nathalie Gaillard

2002 The Bundled Up Illusion, Galerie Nathalie Gaillard, Paris

2001 Apophysis, The Farm of the Convent, Torcy, (Seine et Marne)

2000 Dermis Dom, Galerie Bruno Mory, Besanceuil (Saône et Loire)*

COLLECTIVE EXHIBITIONS (selection):

2016 Inaugural Exhibition, Galerie La Forest Divonne, Bruxelles

2015 Galerie La Forest Divonne, Paris

Art Paris, Galerie La Forest Divonne

2013 Shared Passions, Château de Poncé, Sarthe

2008 Wind in the Branches, « Art Sénat », l'Orangerie, Paris*

2006 Art Paris, Galerie Nathalie Gaillard

2005 The Self-portrait, Galerie Bruno Mory, Besanceuil (Saône et Loire)

2004 Biennale d'Issy-les-Moulineaux*

2003 An Artist, a Space, Galerie Bruno Mory, Besanceuil (Saône et Loire)

1999 Villa Lemot (La Garenne-Lemot), Institut Français de Lisbonne

1998 X Certamen de Pintura de la UNED, Madrid, (Prix d'acquisition)*

1996 Artists of Casa de Velázquez (itinérante) : Casa de Velázquez, Madrid,

Institut de France, Paris, Centro Cultural del Conde Duque, Madrid

Le Mythe d'Icare, Espace l'Estran, Paris, Artistas Europeos con Lorca, Centro Cultural Lorca,

Bruxelles, Propos d'Artistes II (itinérante), Fondation Coprim; Société Lefranc & Bourgeois,

Paris; Abbaye de l'Epau, Le Mans; Musée de Louviers; Palais des Congrès, Saint

Etienne*

PUBLIC COLLECTIONS :

Artothèque de Caen, Artothèque de Mulhouse, Bibliothèque Nationale de France, Paris

Casa de Velázquez, Madrid, Collection UNED, Madrid, Mairie de Valdepeñas, Jaén

EXHIBITION REPORT

CHÂTEAU DE PONCÉ

Exhibition from April 30th to September 18th, 2016

Built by the Chambray family during the first half of the 16th Century, the castle, classified as a historical monument, offers a beautiful example of the Italian influence on the French Renaissance.

The staircase, ascending beneath coffered ceilings, is listed as one of the most remarkable in France. The ceiling's sculpted vaults represent more than 160 allegorical, mythological and heraldic motifs, such as the famous salamander of François I.

The garden, ranked as "Jardin Remarquable," is composed of a symmetrical French *parterre*. It is bordered by a labyrinth of arbors, at the center of which sits an 15th Century plane tree. Overhanging the garden, the *Terrasse Caroline*, of impressive brick and stone décor similar to that of a ruin, attests to the Neogothic taste of the 1830s.



French *parterre*, Château de Ponce



18th Century outbuildings, dovecove and *Terrace Caroline* 1830



French *parterre*

Practical Information

Château de Poncé
8 rue des Coteaux
72340 Poncé-sur-le-Loir (Sarthe)
Phone : 06 72 80 67 35
Phone : 06 50 22 68 35
chateaudeponce@gmail.com
www.chateaudeponce.com

HOURS AND IMPORTANT DATES

May 1 to July 13: Saturday and Sunday:
10am-12pm / 2:30pm – 6:30pm
July 14 to August 24 : Thursday to Sunday :
10am à 12pm / 2:30pm – 6:30pm
September 3 to Heritage Weekend :
Saturday and Sunday: 10am-12pm /
2:30pm – 6:30pm

Starting August 22, the Château is closed
until September 3; visits only possible by
appointment.

PRICES

Individual :

Free for 12 and under

Standard: 6.50 €

Reduced rate: 4.50 € (18 and under,
students, unemployed, part of Maison des
Artistes, family of 4 or more).

Group (Beyond 10 people) :

- 4.50 € per person for standard visit

- 6.00 € per person for guided visit
(Between 1 hour and 90 minutes)

To visit only the exhibition : 4 €

EXHIBITION OPENING

Saturday, July 2nd

Special rate of 4 € including the visit to
the exhibition, the castle and the gardens

Program Schedule:

2:30pm : Opening to the public

3:30pm: Opening speech

4:20pm to 5:40: Concert (artist will
attend)

DIRECTIONS from Paris

TGV Station Vendôme Villiers (42min)

TGV Station St Pierre des Corps, Tours (50min)

TGV Station Le Mans (55min), then 40km by car to
Poncé-sur-Le-Loir

Highway A11 Exit La Ferté Bernard, then Vibraye-
Saint-Calais, in the direction of La Chartre sur le
Loir (200km).

